

Wall-mounted penstock
SEWAGE

Product description (standard execution)

- Tightness in both flow directions class C according to EN 12266-1
- Body and closing component made of steel 1.4301
- Rigid and durable construction ensures the safe operation
- Full-flow product, no dead zones
- Circumferential sealing of the closing component made of silicone elastomer LAR
- Replaceable sealing of the closing component without disassembling of the penstock
- Replaceable nut made of bronze
- Stainless steel valve stem
- Screws and washers connecting the elements made of stainless steel
- Nominal outer diameter of the connection according to EN ISO 6708
- Installation length according to the technical documentation of the manufacturer JAFAR
- Marking of the penstock complies with the requirements of the norm: EN 19

Application:

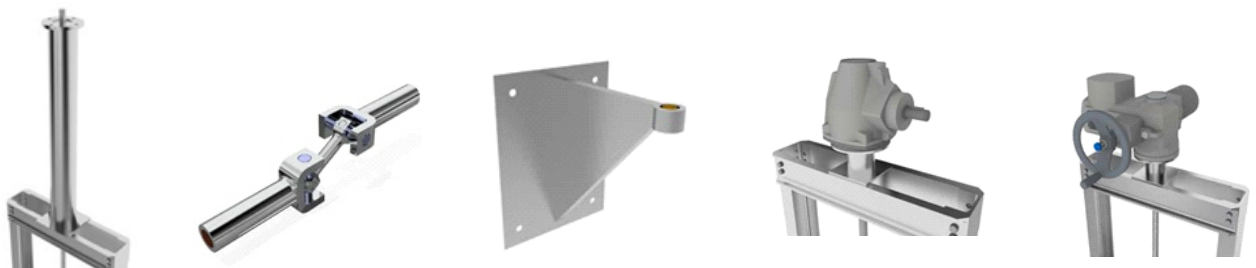
In transporting of wastewater and other inert fluids in treatment plants, sewage pumping stations, drainage and hydrotechnical facilities, road drainage systems, flood protection systems. Installations with working pressure up to 0.6 [bar] and a temperature range from -50°C. to +80°C.

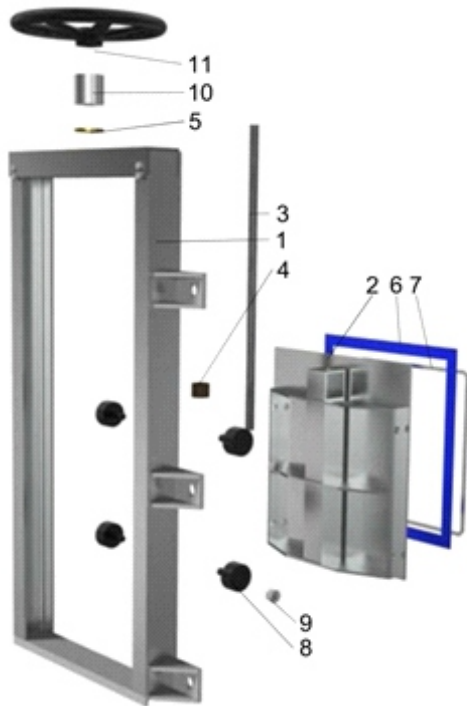
Execution variant:

For actuator
 With gear
 With electric actuator
 Wall valve (downward opening)

Accessories

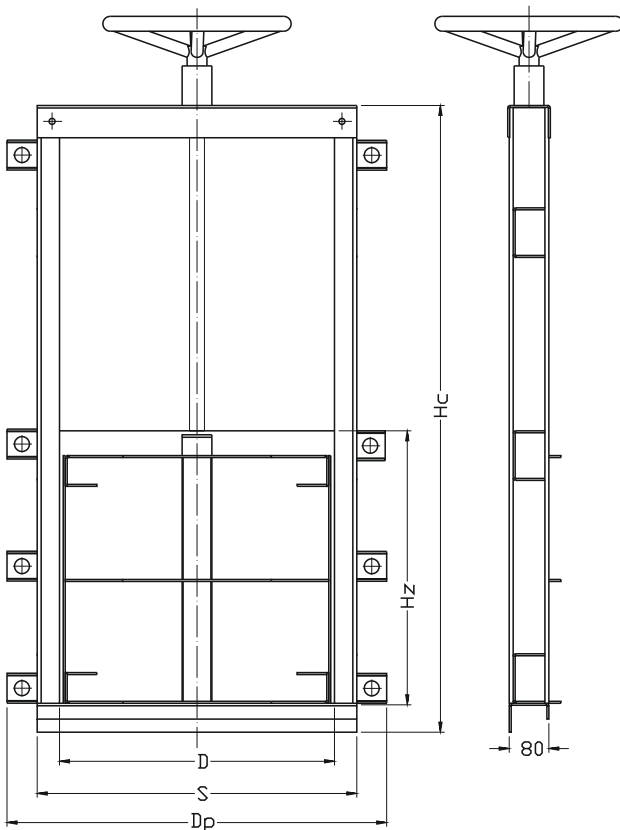
Pillar for actuator
 Housing with cardan shaft
 Wall-mounted bracket
 Wall-mounted pad





No.	Part	Standard execution
1	Body	Steel 1.4301, 1.4401(*), 1.4404(*), 1.4571(*) EN 10027-2
2	Closing component	Steel 1.4301, 1.4401(*), 1.4404(*), 1.4571(*) EN 10027-2
3	Spindle	Steel 1.4301, 1.4401(*), 1.4404(*), 1.4571(*) EN 10027-2
4	Nut	Bronze CW306G EN 1412
5	Bearing	Bronze CW306G EN 1412
6	Gasket	Elastomer LAR, Rubber EPDM, NBR(*) EN-ISO 1629
7	Clamping ring	Steel 1.4301, 1.4401(*), 1.4404(*), 1.4571(*) EN 10027-2
8	Rollers	POM, Brass CW617N(*), Bronze CW306G(*) EN 1412
9	Rollers fixing	Steel 1.4301, 1.4401(*), 1.4404(*), 1.4571(*) EN 10027-2
10	Support socket	Steel 1.4301, 1.4401(*), 1.4404(*), 1.4571(*) EN 10027-2
11	Wheel	Steel 1.4301 EN 10027-2

(*) other material variants on special request



DN	D	S	Dp	Hz	Hc
[mm]					
200	200	300	400	250	700
300	300	400	500	350	900
400	400	500	600	450	1100
500	500	600	700	550	1300
600	600	700	800	650	1500
700	700	800	900	750	1700
800	800	900	1000	850	1900
900	900	1000	1100	950	2100
1000	1000	1100	1200	1050	2300
1100	1100	1200	1300	1150	2500
1200	1200	1300	1400	1250	2700
1300	1300	1400	1500	1350	2900
1400	1400	1500	1600	1450	3100
1500	1500	1600	1700	1550	3300
1600	1600	1700	1800	1650	3500
2000	2000	2100	2200	2050	4300
2500	2500	2600	2700	2550	5300

* - Possibility of manufacturing the product according to individual customer needs (pressure, dimensions, materials used, type of drive and method of assembly). We reserve the rights to modify the production program and the given data without separate notices due to the permanent company development.